

Pim Backup quick user guide

Pim backup is a tool developed for Windows mobile pocket pc. This tool allows to backup/restore appointments, call logs, contacts, messages, tasks, speed dials and custom files.

The backup is totally independent of the version of Windows Mobile running on the device and independent of the device itself. The backup is also independent of the language used on the device. You can easily backup on a Chinese device and restore in a German one.

There are two kinds of backups. The binary based backup has been implemented in order to have a backup/restore process which is faster and more reliable, the disadvantage being that the backup contents cannot be easily modified or viewed.

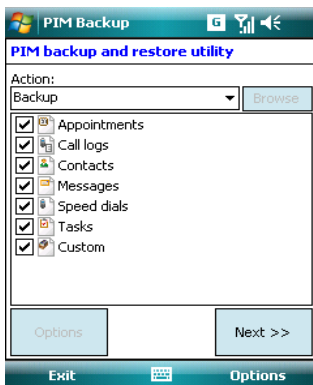
The text based backup has been implemented in order to see/edit the contents on a pc for instance. The text format chosen is CSV (comma separated value), the files can then be edited in Excel for instance.

All backups are stored in a compressed (or not) file with extension ".pib". This file is in fact a zip file, so the contents can easily be extracted.

If the backup is a binary backup, for each kind of item backed up, there will be a dedicated file, with a specific extension; respectively "pbc" for contacts, "pbl" for call logs, "pba" for appointments, "pbt" for tasks, "pbd" for speed dials, "pbm" for messages and "pbx" for custom files.

If the backup is a text backup, for each kind of item backed up, there will be a dedicated file, with a specific extension; respectively "csc" for contacts, "csl" for call logs, "csa" for appointments, "cst" for tasks, "csd" for speed dials, "csm" for messages and "csx" for custom files.

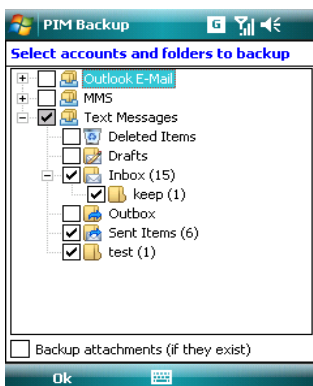
Backup procedure



You can select just the items you want to backup, it is not mandatory to backup them all, but at least one should be selected in order to continue. Two items so far have options, so to enable the "**Options**" button, you have to select the item first. The available options are only for the item "**Custom**" and the item "**Messages**".

Just tick or untick a checkbox in order to select/unselect an Item.

Messages options

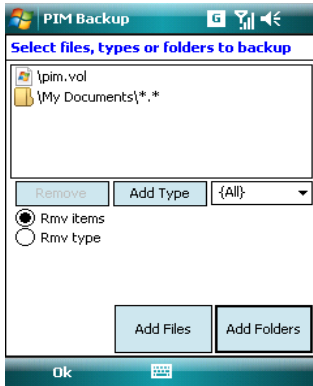


You can select which accounts and folders you want to backup. Also it is possible to backup the attachments only if those have been downloaded and saved on "disk".

Just tick or untick a checkbox in order to select/unselect an Item.

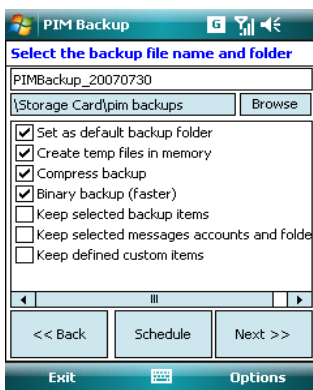
When an account checkbox has a grey background, it means that not all subfolders have been selected.

Custom options



You can select specific files to backup or complete directories, or even specific file types in defined directories. Remark, only files that are not part of the Rom, not read-only and not temporary can be backed up. To add files, just click on the "**Add Files**" button, and select the file you want to add to the list. Do the same for folders, the type selected in the combo box will determine which type of files will be selected in the directory, subdirectories are also taken into account. To remove items, just select them in the list and click on the "**Remove**" button. The file types existing in the combo box are those defined in the registry, you can add custom file type if it doesn't exist in the registry. Only custom types can be removed from the combo box, not those existing in the registry.

Overall backup options



By default the name of the backup is PIMBackup_YYYYMMDD, you can put whatever you want. Don't put the extension at the end, because it will be automatically added by the application.

You can select the directory where the file will be created by clicking on the "**Browse**" button.

The "**Set as default backup folder**" option means that on every backup, the folder you specified will be used to store the file.

The "**Create temp files in memory**" option means that the temporary files (each backup item file meaning pbx or csx) are created on the device itself in folder **Application Data\Volatile**. When this option is not set, the temporary files are created where the backup file will be stored. If this option is set and if there is enough free space on the

device, it will fasten the backup a little bit.

The "**Compress backup**" option means that the temporary files will be compressed before being put into the ".pib" backup file. If this option is not set, the files will just be stored as is in the ".pib" backup file.

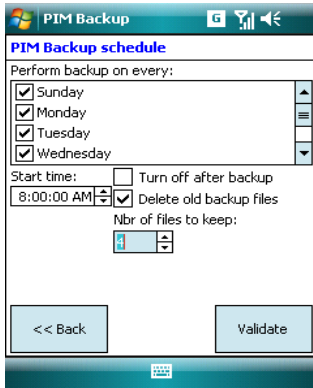
The "**Binary backup(faster)**" option means that an owner file structure is used in order to store the records of each backup item type. This allows the backup and restore process to be faster and more reliable, the disadvantage being that it is not possible to read or edit easily the contents of the backup. If this option is not set, a CSV file (comma separated value) will be created for each backup item type and stored in the ".pib" file. This csv file can easily be read or edited on a pc using Excel for instance.

The "**Keep selected backup items**" option allows to keep the backup items selected on the main dialog window (so appointments, call logs, contacts, ...) each time the application is launched. If not selected, all items are selected by default.

The "**Keep selected messages accounts and folders**" option allows to keep the accounts and folders on the **Messages options** dialog window each time the application is launched. If not selected, only accounts and folders containing items will be selected by default.

The "**Keep defined custom items**" option allows to keep the custom entries selected on the **Custom options** dialog window each time the application is launched. If not selected, no custom entries are selected by default.

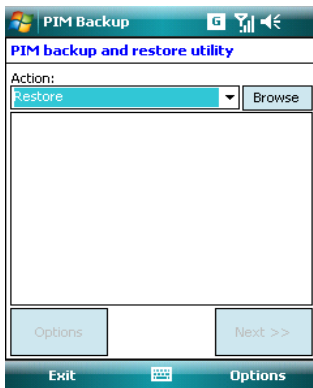
Scheduled backup procedure



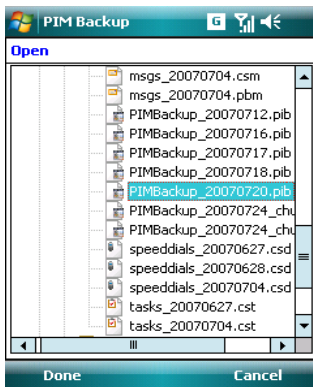
In order to create a scheduled backup, the normal backup procedure should be followed as described above.

On the schedule dialog window, select which days the backup should be performed and define the time when the backup should occur. It is possible to keep and delete old backups, only the last n backups will be kept. To avoid battery drain the pocket pc can be switched off when the backup is finished. To create the scheduled backup, just click on the "Validate" button, and a notification will be created if everything went fine.

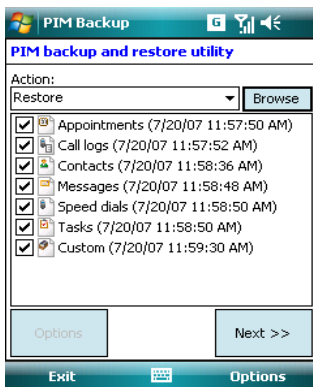
Restore procedure



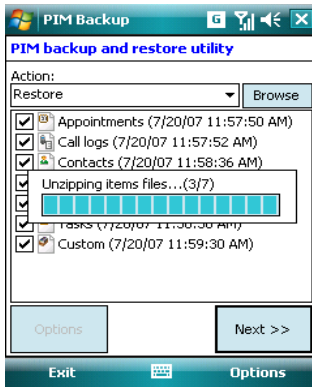
To make a restore of a backup, on the main dialog window, select "Restore" in the "Action" combo box. All items will disappear and they will be replaced by what will be found in the backup file selected. Click on the "Browse" button in order to select the backup file to restore.



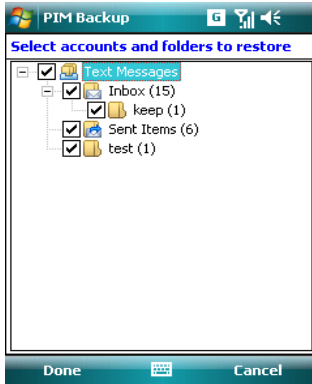
On the "Open" dialog window, select the backup file and click on the "Done" button.



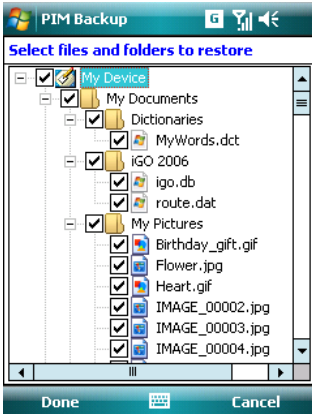
On the main dialog window, you will see the items stored in the backup and when they were created. Just select the items that need to be restored, by default they are all selected. Press the "Next" button to continue.



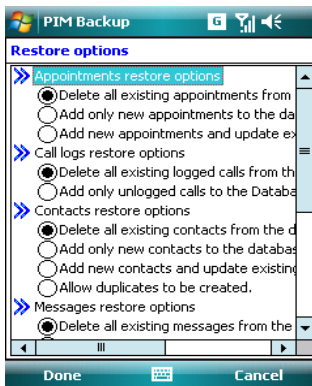
Each backup item file will be then extracted from the ".pib" file.



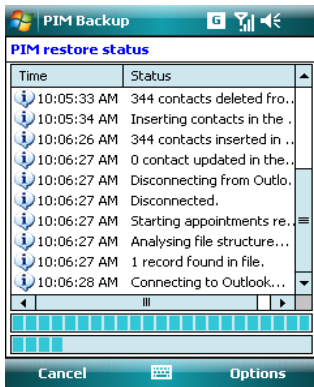
For messages, it is possible to select which accounts and folders will be restored. Bear in mind that what is shown on the screen is what is actually in the backup. In order to restore an account, this account should exist first on the device, otherwise it will be skipped during the restore process.



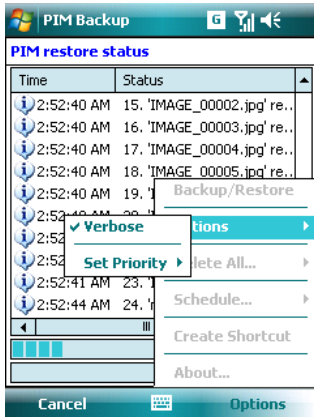
For files and folders, it is possible to select which files or which folders will be restored.



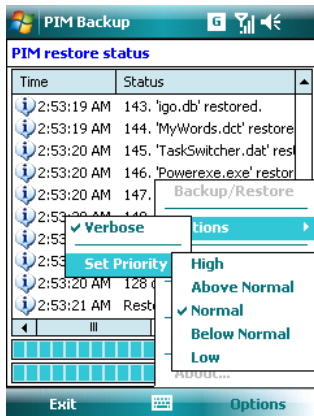
Different restore options are available for each type of item. The "Delete all existing ..."



The restore process can take some time depending on the type of item and on the type of backup. A text backup takes more time to restore, because the backup file needs to be parsed before being restored.



The verbose option can be enabled/disabled during the backup/restore process, it allows to have more details in the status log window.



It is possible to change the priority of the backup/restore task thread. By increasing the priority, the task will be faster, but more resources will be taken by Pim backup and so other applications will be less responsive. By decreasing the priority, the task will be slower, but fewer resources will be taken by Pim backup and so other applications will be more responsive.